



OPAL Wet Weather Plan

At our school, we value outdoor play in all weathers. To keep everyone safe, comfortable and ready to enjoy OPAL, please follow the guidance below.



Clothing – Non-Negotiable

Wellies and waterproof coats are essential during wet weather.

Trainers are not suitable as they soak up water.

Fashionable, absorbent coats or jackets are not appropriate. **Coats must be waterproof.**



Where Wellies Are Required

Wellies must be worn in all muddy areas, including:

- o The fields
- o Astro area
- o Wildlife Way
- o Flowerbeds
- o The two mounds

If you do not have wellies, you will only be allowed to play on the concrete areas, which are:

- o Year 3 playground
- o Upper School playground
- o Lower School playground
- o Courtyard





OPAL Wet Weather Plan

Games and Activities



To keep play safe and reduce excessive mess, please avoid:

- o Play fighting on the astro
 - o Rolling or skidding on wet ground
- (These often lead to very muddy clothes and unsafe play.)

Football may be postponed if fields are too muddy.

- o This decision will be made by an adult.
- o The decision is final and not open to debate.

Toilets and Hygiene

- o All children must wipe their feet before entering the building – whether wearing shoes or wellies.



- o Children must ask a midday supervisor for a toilet pass – this will be handed in to a House Captain who will be monitoring the doorway



- o Hands must be washed after outdoor play. If sinks become muddy, they must be rinsed down and left clean.



- o Mud kitchen containers must not be filled from the toilets.



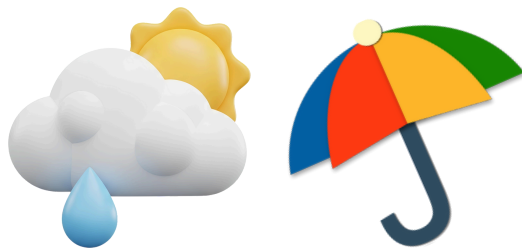


OPAL Wet Weather Plan

Behaviour and Consequences

Children who do not follow these expectations or are unsafe during wet weather play:

- o Will be sent to play in a specific area for the duration of playtime
- o May be temporarily removed from OPAL play until they can demonstrate responsible behaviour.



Thank you for helping us keep OPAL fun, safe and enjoyable for everyone – rain or shine!

