

Severe Weather Information for Parents

This document provides essential information specifically for parents about how Coten End Primary School manages severe weather situations. It focuses on what parents need to know regarding school operations, communication, and safety measures.

1. School Closure and Safety Decisions

- Decisions about school closure, delayed opening, or early closure due to severe weather are made by the school leadership team.
- Safety of pupils and staff is the top priority.

2. Communication With Parents

- Parents will be informed as early as possible (by 8.00am latest) about any changes via the school app notifications and email.
- Updates will also be posted on the school website.
- Warwickshire County Council's school closure text alert service is available: <https://www.warwickshire.gov.uk/schoolclosures> (warwickshire.gov.uk in Bing)

3. School Access During Severe Weather

- Some entrances may be restricted or changed for safety reasons (please see map).
- Parents should follow the guidance on designated entrances for different year groups.
 - Reception enter via classroom doors as normal
 - Years 1 and 2 enter via doors between Reception classrooms
 - Years 4 and 5 enter via main school doors
 - Years 3 and 6 enter via Year 3 doors

4. Outdoor Play and After-School Clubs

- Outdoor play and clubs may be limited or cancelled in severe weather for children's safety.
- Parents will be notified in advance of any cancellations.

5. Clothing and Preparation

- Parents are encouraged to ensure children wear appropriate warm clothing and footwear during cold or snowy weather.

6. Additional Safety Notes

- The school monitors weather conditions closely and will make decisions to keep children safe.
- First aid provision remains available even during severe weather.

This guidance is designed to keep parents informed and reassured about the school's approach to severe weather, prioritizing the safety and well-being of all children.

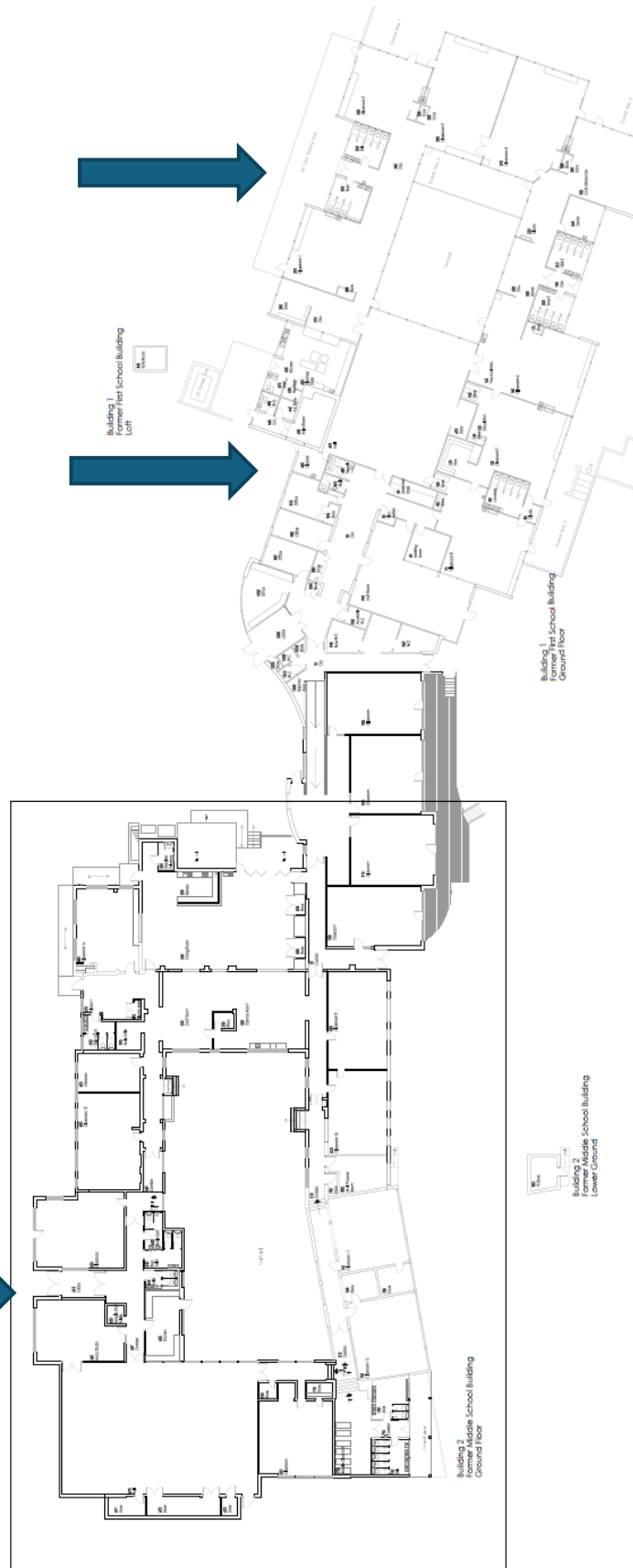
RESTRICTED ENTRANCES IN SNOWY WEATHER

**William Tarver Close
gate closed**

Reception enter though
class doors as normal.
Year 1 and Year 2
through doors between
Reception classrooms.

Years 4 and 5
enter via main
entrance.

Years 6 and 3 enter
via Year 3 door



No playground access

**St Nicholas Park
Leisure Centre
gate closed**